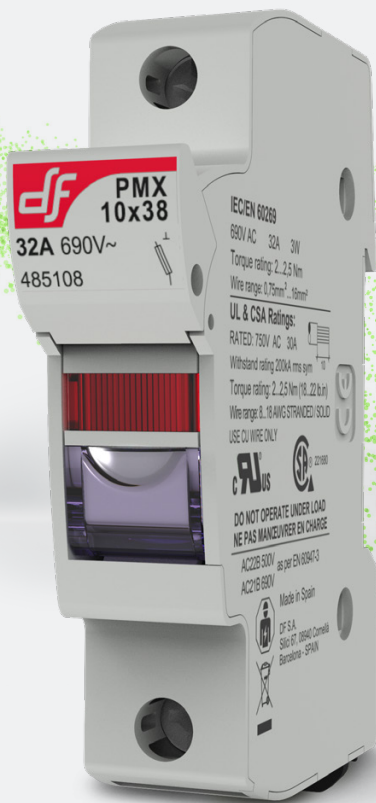


CYLINDRICAL

FUSE LINKS & FUSE HOLDERS/BASES



PMX

industrial modular fuse holders
for cylindrical fuse links

PMX

10x38



8x32

10x38

14x51

22x58

PROTECTING THE WORLD



RATED CURRENT
32A

RATED VOLTAGE
690V AC
750V DC

MAXIMUM POWER DISSIPATION
4W

PROTECTION INDEX
IP20

STANDARDS

IEC/EN 60269-1
IEC/EN 60269-2
UL 4248-1
UL 486E
CSA C22.2 N° 4248-1
CSA 22.2 N° 65



**PATENTED
DESIGN**

Industrial modular fuse holders for cylindrical fuse links

Modular fuse holder for cylindrical fuse link size 10x38 according IEC/EN 60269 standard.

Compact design, with reduced dimensions.

Ventilation zones optimized for a better heat dissipation.

Manufactured with a high quality materials

- Silver plated copper contacts.
- Plastic materials with high temperature resistance and self-extinguishable.
- All the materials are according to the European Directive RoHS.



Extended range of accessories is available.

UL certification (File E193529).
CSA certification (File 221680).



Accessories

REFERENCE	DESCRIPTION	PACKING
		Uni /BOX
480005	PINS FOR MULTIPOLE ASSEMBLY	12/300
485050	HANDLE TIES FOR MULTIPOLE ASSEMBLY	12/300
485051	LOCK ACCESSORY	5
485052	SPECIAL IP20 PROTECTION ACCESSORY	24
485053	PHASE SEPARATOR ACCESSORY	12
485054	FUSING NEON INDICATOR REPLACEMENT 120/690V AC	6
485055	FUSING INDICATOR REPLACEMENT 24V DC	6
485656	SCREWS PROTECTION ACCESSORY	20

Range

U _n	REFERENCE		POLES	MODULES	PACKING
	WITHOUT INDICATOR	WITH INDICATOR			
690V AC 750V DC	485101	485108	1P	1	12/180
	485102	-	N	1	12/180
	485120	-	1P + N	1	12/180
	485103	485109	1P + N	2	6/90
	485104	485110	2P	2	6/90
	485105	485111	3P	3	4/60
	485121	-	3P + N	3	4/60
	485106	485112	3P + N	4	3/45
	485107	485113	4P	4	3/45
	24V DC	-	485114	1P	1
-		485116	2P	2	6/90

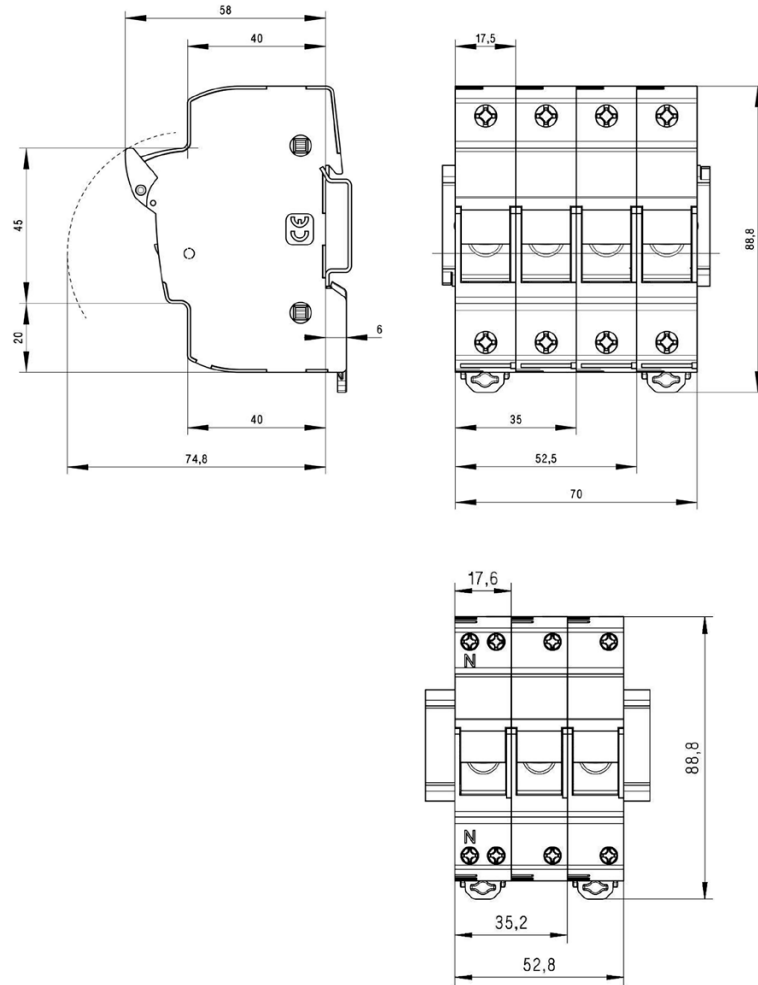


Technical data

Rated current	32A 30A UL MIDGET												
Rated voltage	690V AC 750V DC 750V AC UL MIDGET												
Rated power dissipation	3W												
Maximum power dissipation	4W												
Power dissipation per pole (with neutral link)	80% $I_n > 0,27W$ 100% $I_n > 0,43W$												
Power dissipation (1P+N 1 module)	80% $I_n > 1,1W$ 100% $I_n > 1,8W$												
Power dissipation (3P+N 3 modules)	80% $I_n > 1,8W$ 100% $I_n > 3W$												
Utilization category as per EN 60947-3	AC-22B ^{500V} AC-21B ^{690V} DC-20B ^{750V DC}												
Pollution degree	3												
Protection index *	IP20												
Rated impulse withstand voltage	6kV U imp												
Ambient temperature of service	-20°C ... 70°C												
Storage temperature	-40°C ... 80°C												
Derating by number of poles	<table border="1"> <thead> <tr> <th>POLES</th> <th>I_{MAX}</th> </tr> </thead> <tbody> <tr> <td>1 ... 4</td> <td>I_n</td> </tr> <tr> <td>5 ... 6</td> <td>$0,8 \times I_n$</td> </tr> <tr> <td>7 ... 9</td> <td>$0,7 \times I_n$</td> </tr> <tr> <td>≥ 10</td> <td>$0,6 \times I_n$</td> </tr> </tbody> </table>	POLES	I_{MAX}	1 ... 4	I_n	5 ... 6	$0,8 \times I_n$	7 ... 9	$0,7 \times I_n$	≥ 10	$0,6 \times I_n$		
POLES	I_{MAX}												
1 ... 4	I_n												
5 ... 6	$0,8 \times I_n$												
7 ... 9	$0,7 \times I_n$												
≥ 10	$0,6 \times I_n$												
Correction of the admissible current in function of the temperature	<table border="1"> <tbody> <tr> <td>20° C</td> <td>1</td> </tr> <tr> <td>30° C</td> <td>0,95</td> </tr> <tr> <td>40° C</td> <td>0,90</td> </tr> <tr> <td>50° C</td> <td>0,80</td> </tr> <tr> <td>60° C</td> <td>0,70</td> </tr> <tr> <td>70° C</td> <td>0,60</td> </tr> </tbody> </table>	20° C	1	30° C	0,95	40° C	0,90	50° C	0,80	60° C	0,70	70° C	0,60
20° C	1												
30° C	0,95												
40° C	0,90												
50° C	0,80												
60° C	0,70												
70° C	0,60												

* For wires of section $\leq 6mm^2$ is necessary the use of the accessory to guarantee IP20 in clamps zone. ► **FIG. 4**

Dimensions



Weight

1P	57gr
N	60gr
1P + N (1 module)	62gr
1P + N (2 modules)	117gr
2P	114gr
3P	171gr
3P + N (3 modules)	167gr
3P + N (4 modules)	231gr
4P	228gr

Weight without packing

Standards

IEC/EN 60269-1
IEC/EN 60269-2
UL4248-1 Fuse holders
UL486E Wiring terminals
CSA C22.2 N° 4248-1 Fuse holder assemblies
CSA 22.2 N° 65 Wire connectors

Certifications





Application characteristics

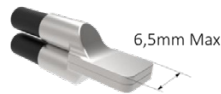
For mounting on DIN/EN standard rail DIN 46277/1-3 (EN50022)
Clip fixation with 2 positions

Screw fixation Available with accessory
▶ **FIG. 7**

Connecting wire
Copper wires only

WIRES	METRIC	AWG	WIRING
1	0,75...16mm ² Solid / Stranded	8...18 AWG Solid / Stranded	
2 Same cross section and type	0,75...10mm ² Solid 0,75...6mm ² Stranded	8...18 AWG Solid 10...18 AWG Stranded	

Wire-end terminals The use of wire-end terminals may allow to increase the connecting wire section.
Wire-end terminals recommended mounting:



The use of wire-end terminals could not guarantee the IP20 protection degree.

Ferrules It's recommended use of ferrules in wires with section ≤ 2,5mm²



The product is delivered with the terminals opened and ready to connect

Tightening torque on terminals	2...2,5 Nm 18...22 lb.in
Screws with a combined head	SLOT + PZ2
Multipolar assembly	▶ FIG. 1
Fuse holders with fuse indicator	NEON LAMP 120...690V AC LED 12...24V DC
Special zone for sealing	1,5 mm ² wire
Label holder for a better circuit identification	▶ FIG. 2 Suitable size for label: 11x9 mm
Accessory available to lock the fuse holder by a padlock	▶ FIG. 3 (max. 3 padlocks of Ø 3mm)

Accessories

FIG. 1 | Multipolar assembly

Standard system by DF, 3 clips and 1 pin for each union between poles

480005	PINS FOR MULTIPOLE ASSE
485050	HANDLE TIES FOR MULTIPOLE ASSEMBLY

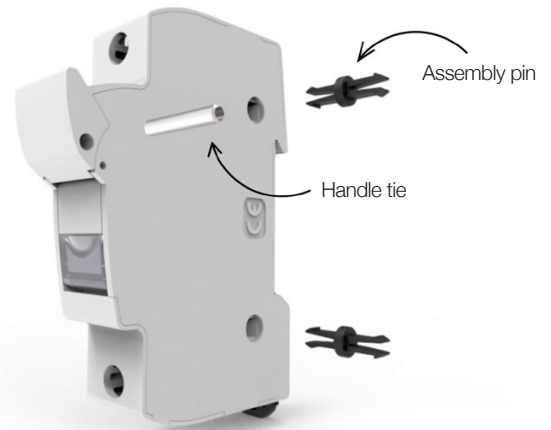
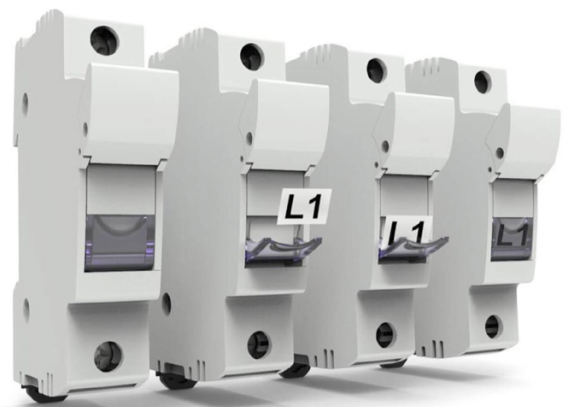


FIG. 2 | Identification by label

Open the label holder part with the fuse holder closed, put on the label and close it



Label measures **11x9mm**



Accessories

FIG. 6 | Screws protection accessory

Protection accessory to avoid the screws manipulation and improve the protection degree

485656 SCREWS PROTECTION ACCESSORY

Manual assembly



FIG. 7 | Screw fixation accessory

First mount the accessory with screws, then mount the fuse holder (there are available different accessories depending on the number of the fuse holder)

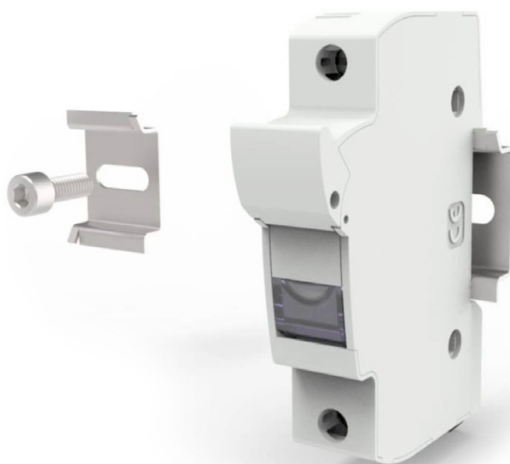


FIG. 8 | Fusing indicator replacement instructions

485054 FUSING NEON INDICATOR REPLACEMENT 120/690V AC

485055 FUSING INDICATOR REPLACEMENT 24V DC

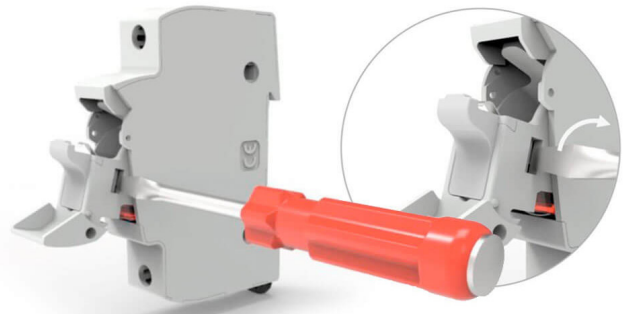
1

Open the fuse holder



2

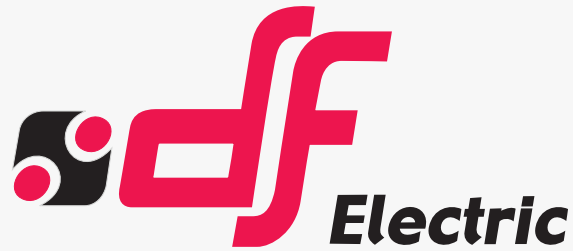
Using a flat screwdriver, remove the cover with a slight rotation of the tool



3

Replace the fusing indicator. Enter the cover on the handle with a slight angle





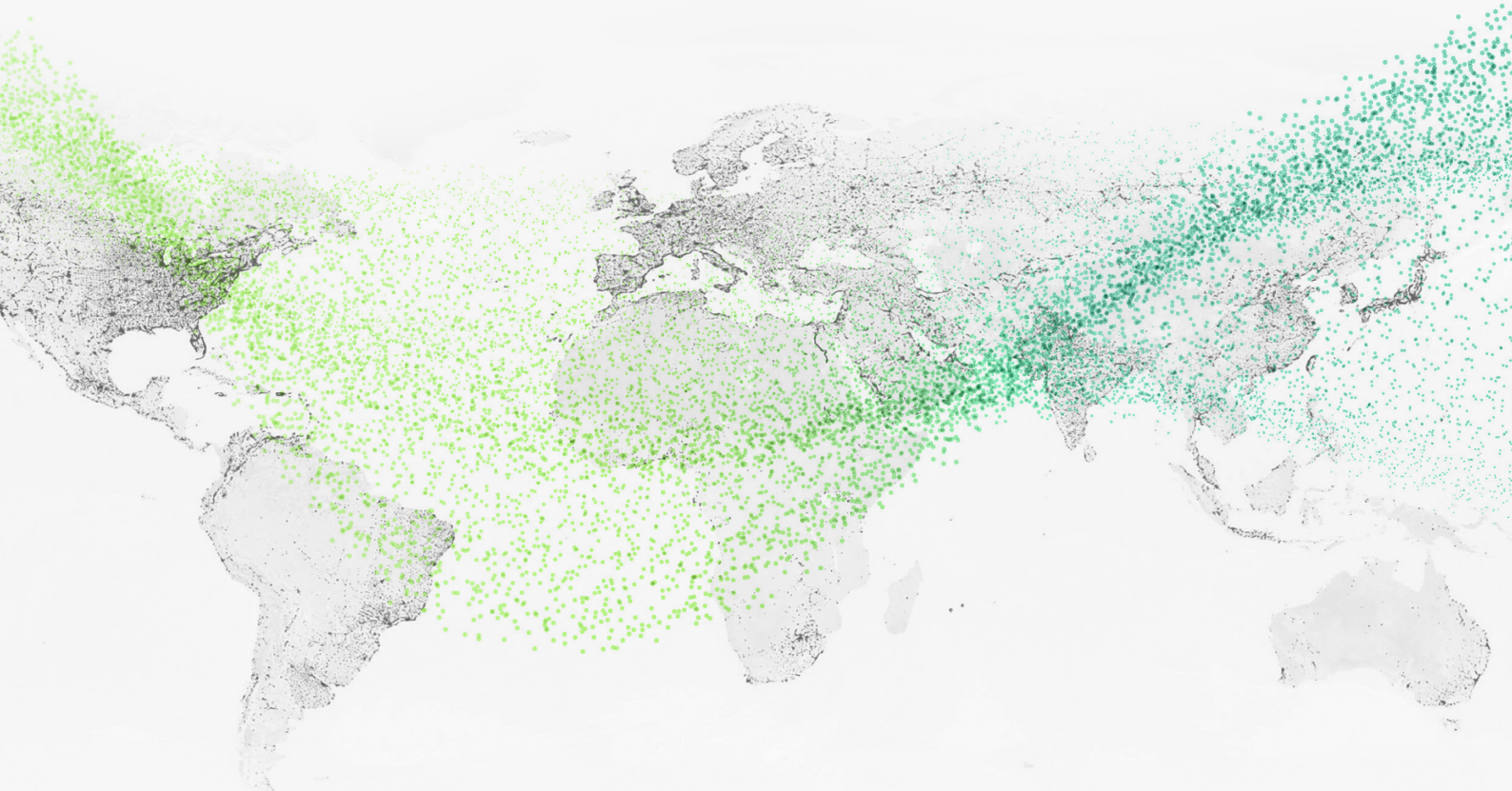
PROTECTING THE WORLD



HEAD OFFICE AND FACTORY
 SILICI, 67-69
 08940 CORNELLA DE LLOBREGAT
 BARCELONA · SPAIN
 Tel. +34 93 377 85 85
 Fax +34 93 377 82 82

INTERNATIONAL SALES
 Tel. +34 93 475 08 64
 Fax +34 93 480 07 75
 export@dfelectric.es

NATIONAL SALES
 Tel. 93 475 08 64
 Fax 93 480 07 76
 comercial@dfelectric.es



dfelectric.es



According to the waste of electrical and electronic equipment directive, electrical material should not be part of the usual waste. This symbol alerts users that these products should be recycled according to local environmental waste disposal regulations.



The "electro technical expert" logo marked on the products included in this data sheet indicates that the installation of these products must be carried out by expert personnel with specialized knowledge.



To prevent electrical hazards, carry out the installation without voltage.



Safety notice
 Please capture the following QR code and read our safety notice carefully before installing our products.



The data reflected in this technical record are subject to the correct installation of the product in accordance with manufacturer's instructions, relevant installation standards and professional practices, maintained and used in applications for which they were made.

The products described in this document have been designed, developed and tested in accordance with specific standard. They are considered components that are integrated as part of installation, machine or equipment. The correct general operation of the referred product is responsibility of the manufacturer of the installation, machine or equipment.

DF ELECTRIC cannot guarantee the characteristics of an installation, machine or equipment that has been designed by a third party. Once a product has been selected, the user must verify that it is appropriate for its application, through the verifications and/or tests that it deems appropriate.

DF ELECTRIC retains the right to change the dimensions, specifications, materials or design of its products at any time with or without notice.

©2023 DF Electric. All rights reserved